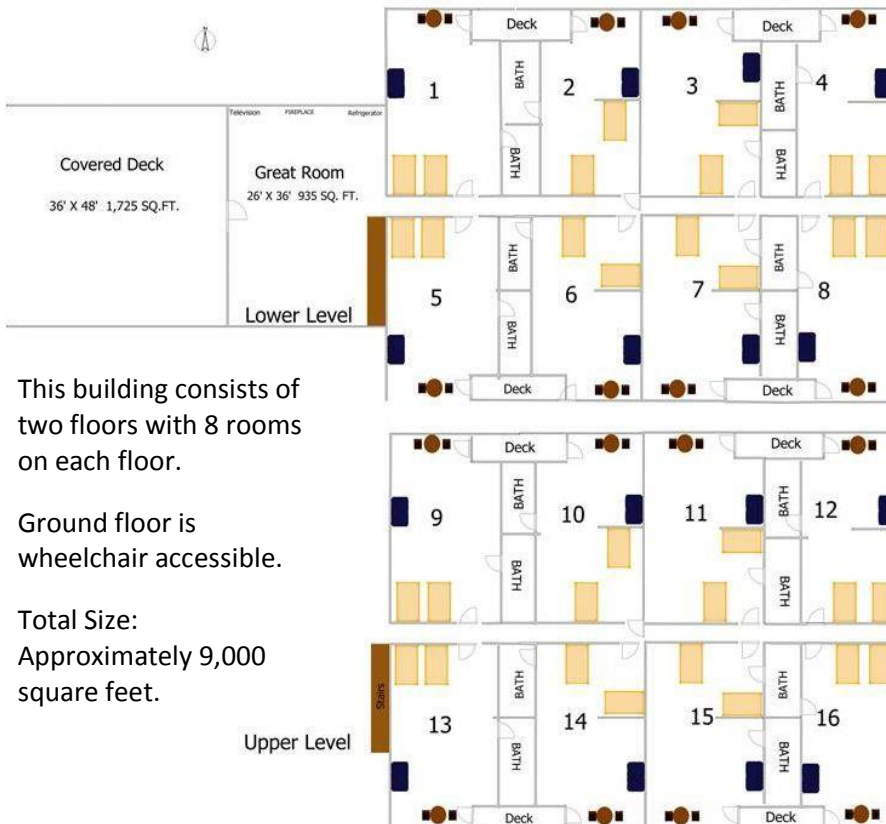


Treetopper Lodge – 16 Rooms



Meeting space can be added and is available in our Conference Center



This building consists of two floors with 8 rooms on each floor.

Ground floor is wheelchair accessible.

Total Size:
Approximately 9,000 square feet.

16 Hotel Size Rooms – Each w/1 king, 1 queen and sleeper sofa beds plus private bath and balcony.

Gathering Room with fireplace, comfortable seating, satellite TV, kitchenette & covered porch.

FREE WIFI and parking.

706-864-6456

